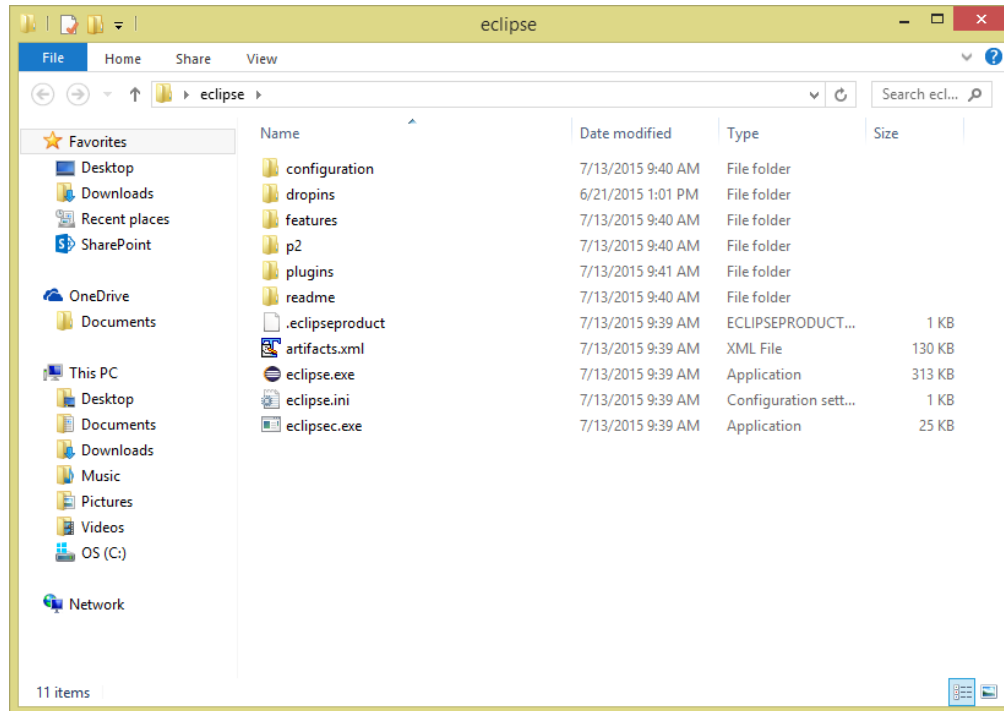


Running Eclipse

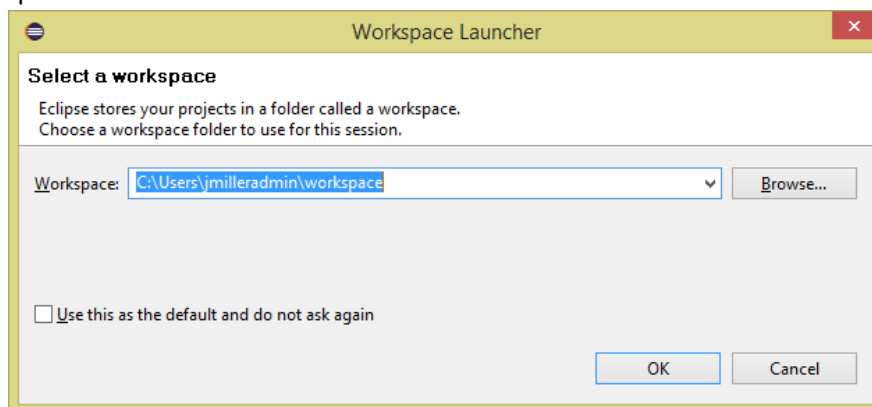
Prepared by Prof. Jeffrey Miller

Running Eclipse

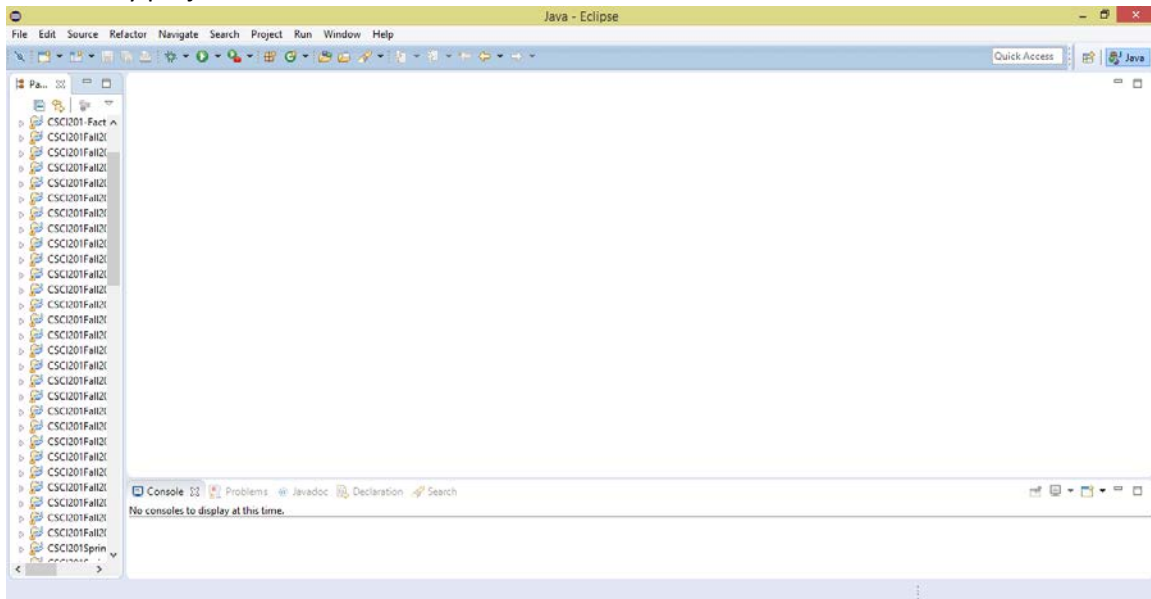
Open the “eclipse” folder that was created on your desktop in the previous section. You should see the following files.



Run the “eclipse.exe” file. If you do not have file extensions shown, double click on the file that says “eclipse” with the purple circle next to it. You will see a window that asks you to select a workspace. You can leave the default workspace. (Note: You do not need (nor should you) specify the workspace I have in the screenshot below since you probably do not have that directory on your computer.) A workspace is the directory in which all of your projects and programs will go. Click the OK button to select the workspace.



After choosing a workspace, you will see a screen similar to what is below. You may see a welcome screen, and if you do, close the welcome tab. You will then be seeing a screen like below, though you won't have any projects on the left side like I have.



You are now ready to start using Eclipse!